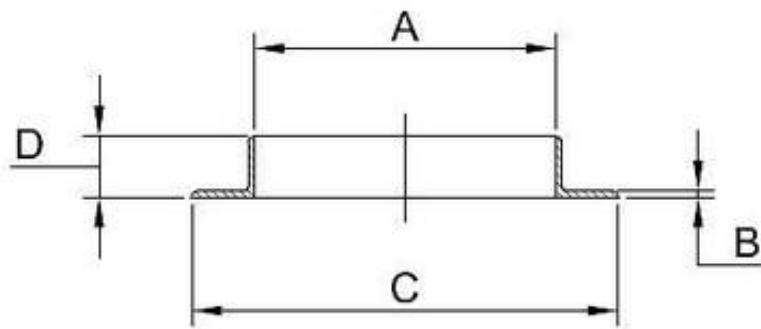


Metric Angle Collars - OSTP Tru-Bore®

Type 316L and Type 304L



Metric Angle Collars - OSTP Tru-Bore®

Type 316L and Type 304L



Inside	Wall	Overall	Overall	Weight	Product	Product
Diameter	Thickness	Diameter	Height	Per Piece	Code	Code
'A' mm	'B' mm	'C' mm	D' mm	Kilos	316L	304L
200	4	260	30	1	104A200400	104B200400
250	4	310	30	1.5	104A250400	104B250400
300	4	360	30	1.78	104A300400	104B300400
350	4	430	40	2.84	104A350400	104B350400
400	4	480	40	3.22	104A400400	104B400400
450	4	530	40	3.6	104A450400	104B450400
500	4	580	40	3.98	104A500400	104B500400
600	4	680	40	4.74	104A600400	104B600400
700	5	800	50	8.67	104A700500	104B700500
800	5	900	50	9.85	104A800500	104B800500
900	5	1000	50	11.04	104A900500	104B900500
1000	5	1100	50	12.23	104AA10005	104BB10005
1200	5	1300	50	14.67	104AA12005	104BB12005