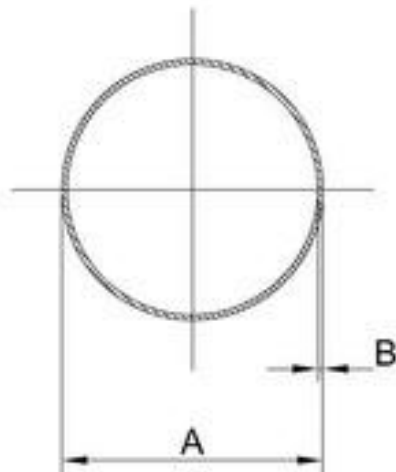
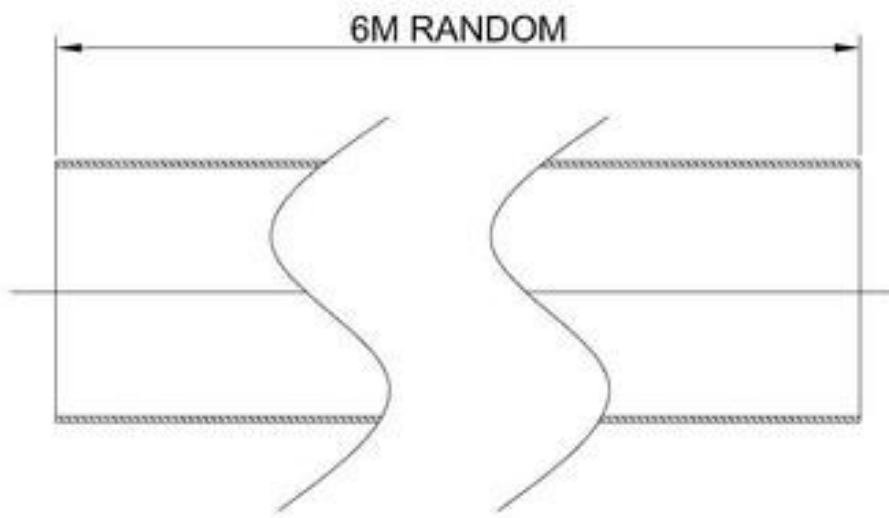


Metric Tube - OSTP Tru-Bore®

Type 316L and Type 304L



Metric Tube - OSTP Tru-Bore®

Type 316L and Type 304L



Inside	Wall	Weight	Pressure	Product	Product
Diameter	Thickness	Per Metre	Rating in Bar	Code	Code
'A' mm	'B' mm	Kilos	at 20 Deg C	316L	304L
15	1.5	0.62	244	100A015150	100B015150
20	1.5	0.81	188	100A020150	100B020150
25	1.5	1	153	100A025150	100B025150
32	1.5	1.26	121	100A032150	100B032150
40	1.5	1.56	98	100A040150	100B040150
40	2	2.13	132	100A040200	100B040200
50	1.5	1.93	77	100A050150	100B050150
50	2	2.6	108	100A050200	100B050200
65	1.5	2.5	61	100A065150	100B065150
65	2	3.41	84	100A065200	100B065200
80	1.5	3.06	52	100A080150	100B080150
80	2	4.11	72	100A080200	100B080200
100	1.5	3.81	41	100A100150	100B100150
100	2	5.11	57	100A100200	100B100200
100	3	7.74	87	100A100300	100B100300
125	1.5	4.75	33	100A125150	100B125150
125	2	6.36	46	100A125200	100B125200
150	1.5	5.69	27	100A150150	100B150150
150	2	7.61	38	100A150200	100B150200
150	3	11.49	57	100A150300	100B150300
200	1.5	7.57	21	100A200150	100B200150
200	2	10.12	28	100A200200	100B200200
200	3	15.25	43	100A200300	100B200300
250	2	12.62	23	100A250200	100B250200
250	3	19.01	34	100A250300	100B250300
300	2	15.12	19	100A300200	100B300200
300	2.5	18.94	24	100A300250	100B300250
300	3	22.76	28	100A300300	100B300300
350	2.5	22.07	20	100A350250	100B350250
350	3	26.48	24	100A350300	100B350300
400	3	30.27	21	100A400300	100B400300

Metric Tube - OSTP Tru-Bore®

Type 316L and Type 304L



Inside	Wall	Weight	Pressure	Product	Product
Diameter	Thickness	Per Metre	Rating in Bar	Code	Code
'A' mm	'B' mm	Kilos	at 20 Deg C	316L	304L
450	3	34.03	19	100A450300	100B450300
500	3	37.78	17	100A500300	100B500300
600	3	45.29	10	100A600300	100B600300
700	4	70.51	11	100A700400	100B700400
800	4	80.52	9	100A800400	100B800400
900	4	90.54	8	100A900400	100B900400
1000	5	125.82	7	100AA10004	100BB10004
1200	5	152.12	6	100AA12004	100BB12004