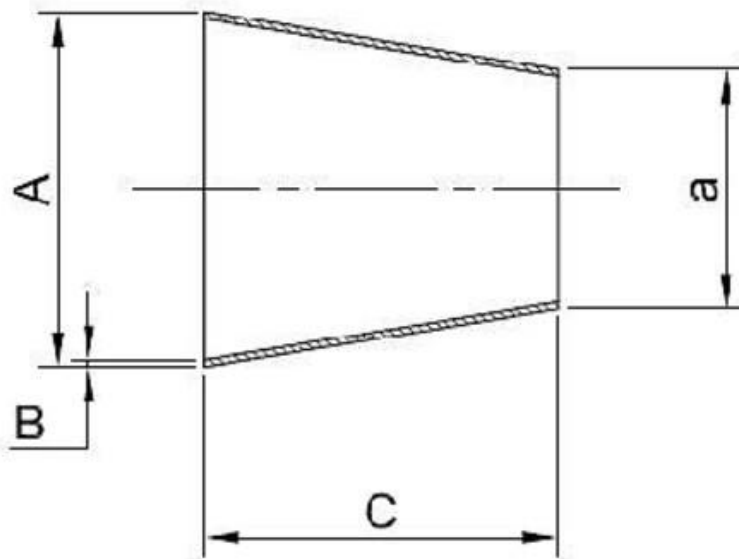


SMS-419 - ISO Concentric Reducers

Type 316L and Type 304L



SMS-419 - ISO Concentric Reducers

Type 316L and Type 304L



Outside Diameter	Outside Diameter	Wall Thickness	Overall Length	Weight Per Piece	Product Code	Product Code
A' mm	a' mm	B' mm	C' mm	Kilos	316L	340L
26.9	21.3	2	17	0.02	419A269213	419B269213
33.7	21.3	2	37	0.05	419A337213	419B337213
33.7	26.9	2	20	0.03	419A337269	419B337269
42.4	21.3	2	63	0.1	419A424213	419B424213
42.4	26.9	2	46	0.08	419A424269	419B424269
42.4	33.7	2	26	0.05	419A424337	419B424337
48.3	21.3	2	81	0.14	419A483213	419B483213
48.3	26.9	2	64	0.12	419A483269	419B483269
48.3	33.7	2	44	0.09	419A483337	419B483337
48.3	42.4	2	18	0.04	419A483424	419B483424
60.3	21.3	2	117	0.24	419A603213	419B603213
60.3	26.9	2	100	0.22	419A603269	419B603269
60.3	33.7	2	80	0.19	419A603337	419B603337
60.3	42.4	2	54	0.14	419A603424	419B603424
60.3	48.3	2	36	0.1	419A603483	419B603483
76.1	26.9	2	148	0.38	419A761269	419B761269
76.1	33.7	2	127	0.35	419A761337	419B761337
76.1	42.4	2	101	0.3	419A761424	419B761424
76.1	48.3	2	83	0.26	419A761483	419B761483
76.1	60.3	2	47	0.16	419A761603	419B761603
88.9	33.7	2	166	0.51	419A889337	419B889337
88.9	42.4	2	139	0.46	419A889424	419B889424
88.9	48.3	2	122	0.43	419A889483	419B889483
88.9	60.3	2	86	0.32	419A889603	419B889603
88.9	76.1	2	38	0.16	419A889761	419B889761
114.3	26.9	2	262	0.93	419A114269	419B114269
114.3	33.7	2	242	0.9	419A114337	419B114337
114.3	42.4	2	216	0.85	419A114424	419B114424
114.3	48.3	2	198	0.8	419A114483	419B114483
114.3	60.3	2	162	0.71	419A114603	419B114603
114.3	76.1	2	115	0.55	419A114761	419B114761

SMS-419 - ISO Concentric Reducers

Type 316L and Type 304L



Outside Diameter	Outside Diameter	Wall Thickness	Overall Length	Weight Per Piece	Product Code	Product Code
A' mm	a' mm	B' mm	C' mm	Kilos	316L	340L
114.3	88.9	2	76	0.39	419A114889	419B114889
139.7	60.3	2	238	1.2	419A139603	419B139603
139.7	76.1	2	191	1.04	419A139761	419B139761
139.7	88.9	2	152	0.88	419A139889	419B139889
139.7	114.3	2	76	0.49	419A139114	419B139114
168.3	60.3	2	324	1.87	419A168603	419B168603
168.3	76.1	2	277	1.71	419A168761	419B168761
168.3	88.9	2	238	1.55	419A168889	419B168889
168.3	114.3	2	162	1.16	419A168114	419B168114
168.3	139.7	2	86	0.67	419A168139	419B168139
219.1	88.9	2	391	3.05	419A219889	419B219889
219.1	114.3	2	314	2.66	419A219114	419B219114
219.1	139.7	2	238	2.16	419A219139	419B219139
219.1	168.3	2	152	1.5	419A219168	419B219168
273	114.3	2	476	4.67	419A273114	419B273114
273	139.7	2	400	4.18	419A273139	419B273139
273	168.3	2	314	3.51	419A273168	419B273168
273	219.1	2	162	2.02	419A273219	419B273219
323.9	114.3	2	629	6.9	419A323114	419B323114
323.9	139.7	2	553	6.49	419A323139	419B323139
323.9	168.7	2	467	5.82	419A323168	419B323168
323.9	219.1	2	314	4.32	419A323219	419B323219
323.9	273	2	153	2.31	419A323273	419B323273