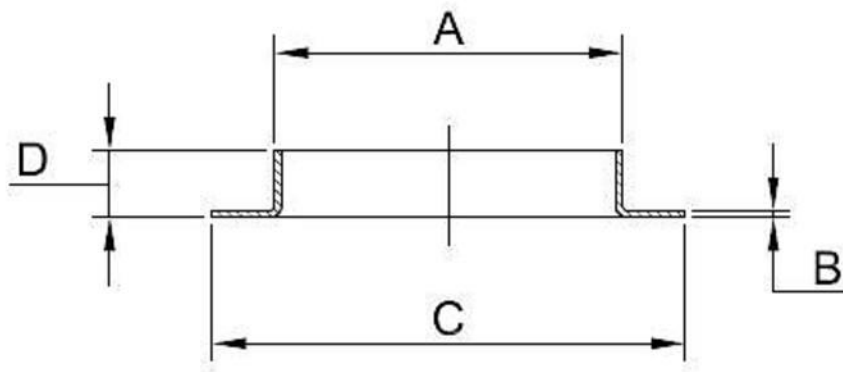


SMS-406 - ISO Pressed Collars

Type 316L and Type 304L



SMS-406 - ISO Pressed Collars

Type 316L and Type 304L



Outside	Wall	Overall	Overall	Weight	Product	Product
Diameter	Thickness	Diameter	Height	Per Piece	Code	Code
A' mm	B' mm	C' mm	D' mm	Kilos	316L	340L
33.70	3	68	10	0.08	406A033703	406B033703
42.40	3	78	10	0.09	406A042403	406B042403
48.30	3	88	10	0.11	406A048303	406B048303
60.30	3	102	12	0.14	406A060303	406B060303
76.10	3	122	12	0.2	406A076103	406B076103
88.90	3	133	12	0.25	406A088903	406B088903
114.30	3	158	25	0.29	406A114303	406B114303
139.70	3	184	25	0.43	406A139703	406B139703
168.30	3	212	25	0.52	406A168303	406B168303
219.10	3	268	25	0.76	406A219103	406B219103
273.00	3	320	23	0.82	406A273003	406B273003
323.90	3	370	24	1.06	406A323903	406B323903
21.3	2	47	6	0.01	406C021302	406D021302
26.9	2	58	7	0.04	406C026902	406D026902
33.7	2	68	9	0.05	406C033702	406D033702
42.4	2	78	10	0.07	406C042402	406D042402
48.3	2	88	10	0.08	406C048302	406D048302
60.3	2	102	12	0.11	406C060302	406D060302
76.1	2	122	12	0.15	406C076102	406D076102
88.9	2	133	13	0.19	406C088902	406D088902
114.3	2	158	13	0.21	406C114302	406D114302
139.7	2	184	14	0.26	406C139702	406D139702
168.3	2	212	18	0.34	406C168302	406D168302
219.1	2	268	22	0.53	406C219102	406D219102
273.00	2	320	22	0.55	406C273002	406D273002
323.90	2	370	24	0.65	406C323902	406D323902